

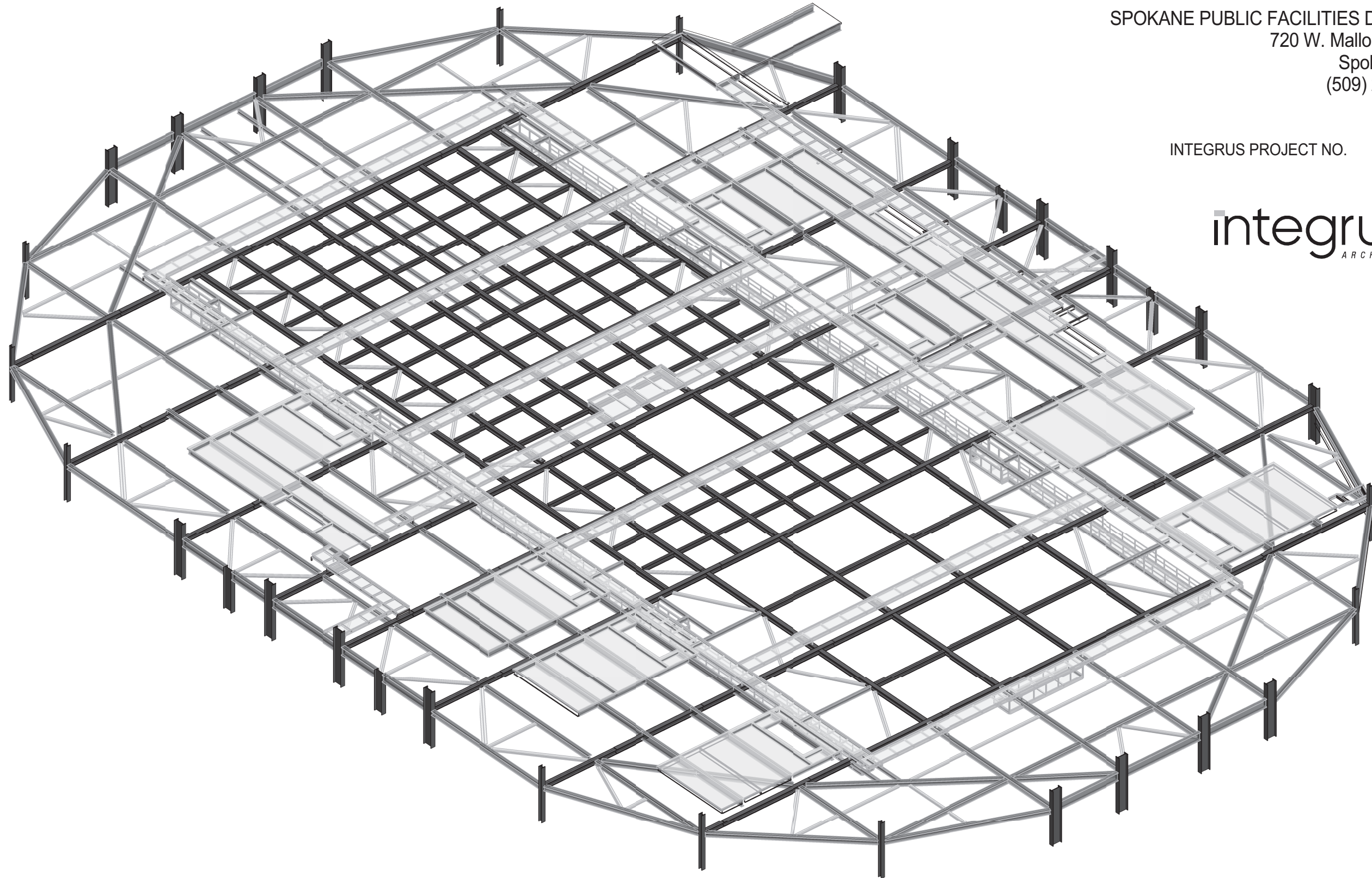
SPOKANE ARENA - RIGGING ALLOWABLE LOADING

SPOKANE VETERANS MEMORIAL ARENA
SPOKANE, WASHINGTON

SPOKANE PUBLIC FACILITIES DISTRICT
720 W. Mallon Avenue
Spokane, WA
(509) 279-7002

INTEGRUS PROJECT NO. 20743.00

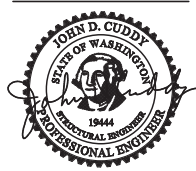
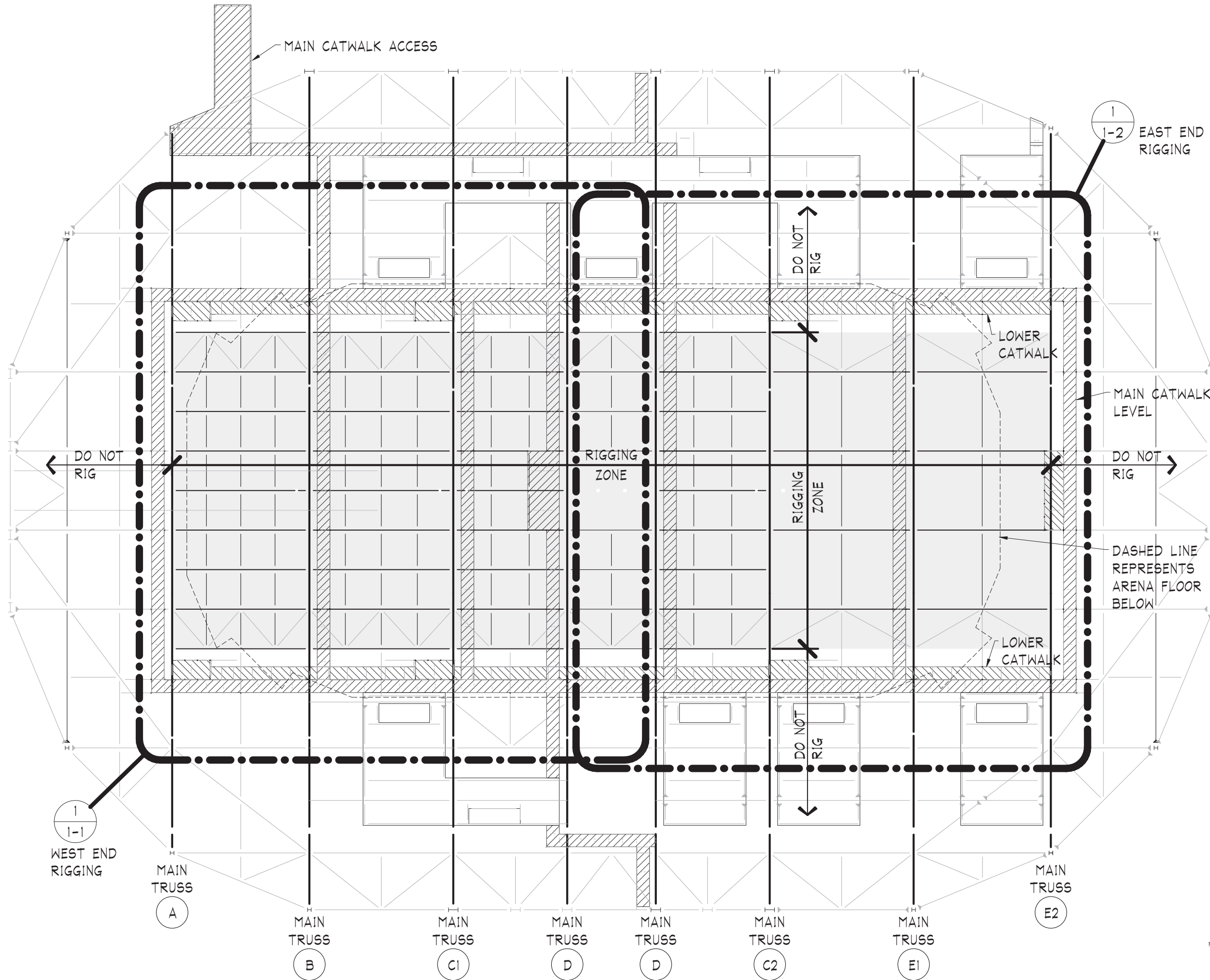
integrus
ARCHITECTURE



7/26/2012

SET NO. _____

C:\Users\ahutchinson\Documents\20743s_Arena_ahutchinson.rvt



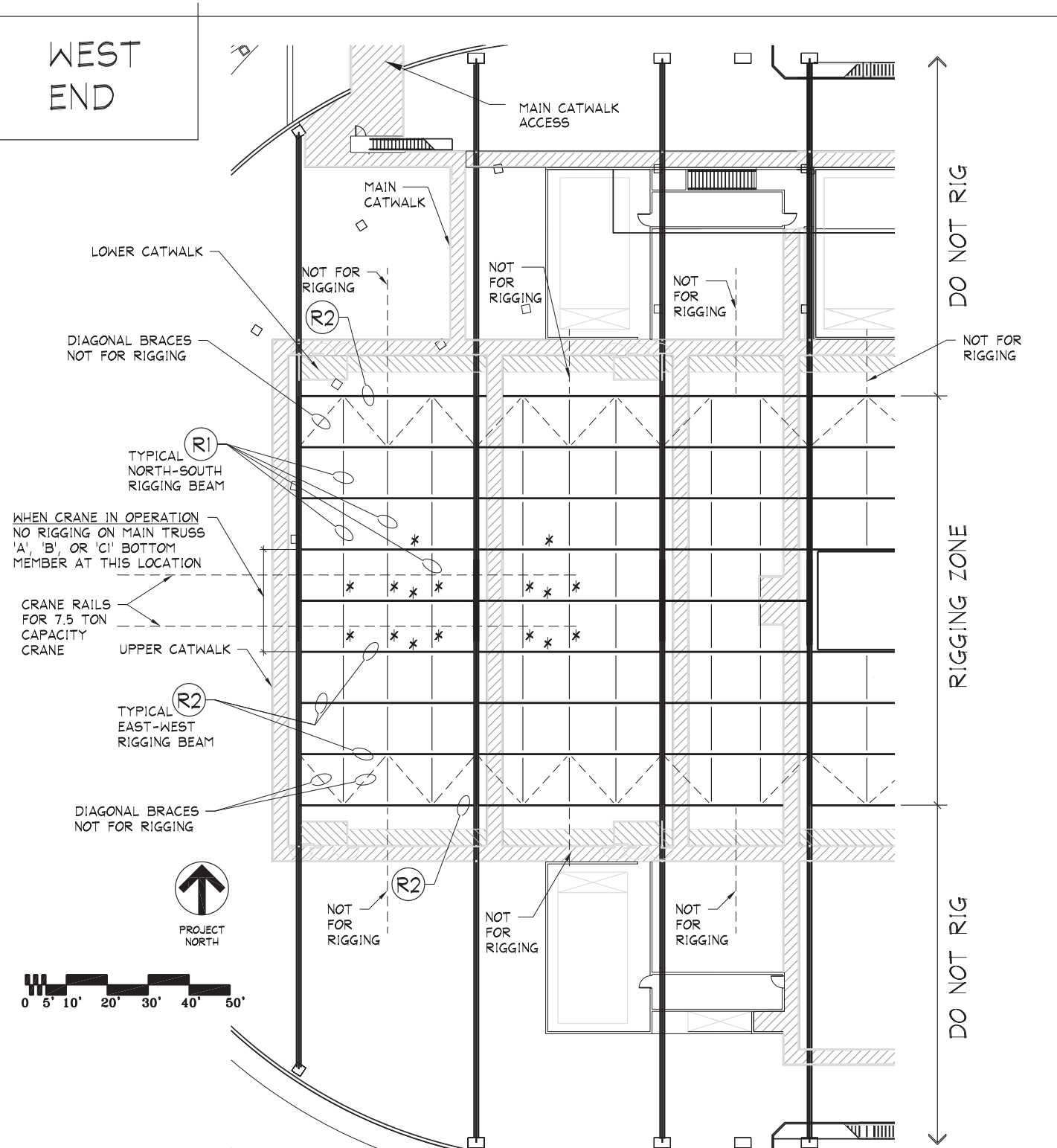
**SPOKANE ARENA - RIGGING
 ALLOWABLE LOADING**

SPOKANE VETERANS MEMORIAL ARENA
 SPOKANE, WASHINGTON

Date:	7/26/2012	
Job No.:	20743.00	
Drawn By:	CC	
Checked by:	HH	
Filename:		
Revisions		
#	Date	Description

OVERALL
 CATWALK/RIGGING
 LEVEL PLAN

WEST
END



	MAIN TRUSS (A)	MAIN TRUSS (B)	MAIN TRUSS (C)	MAIN TRUSS (D)
TOTAL RIGGING CAPACITY:				
w/ CRANE <u>NOT</u> IN OPERATION =	74,000 #	91,000 #	66,000 #	65,000 #
w/ CRANE IN OPERATION =	59,000 #	76,000 #	58,500 #	65,000 #
MAXIMUM UNIFORM LOAD =	870 #/ft	1,070 #/ft	775 #/ft	765 #/ft

LOADS SHOWN ARE THE MAXIMUM TOTAL LOAD THAT CAN BE SAFELY SUPPORTED BY EACH TRUSS. THE SUM OF LOADS FROM 'R1' MEMBERS, 'R2' MEMBERS, & ANY ADDITIONAL RIGGING LOADS APPLIED TO THE TRUSS CANNOT EXCEED THE NOTED "TOTAL RIGGING CAPACITY" OR "MAXIMUM UNIFORM LOAD" AT EACH TRUSS.

R1 LOAD CHART
N.T.S.

I-BEAM CAPACITY NORTH-SOUTH RIG BEAM (SEE PLAN)

MAXIMUM UNIFORM LOAD;
W = 1250 #/FT

WHEN CRANE IN OPERATION;
MEMBERS MARKED WITH '*'
W = 75#/ft.

MAXIMUM SINGLE POINT LOAD;
P1 + P2 = 16,000 # MAX.

WHEN CRANE IN OPERATION;
MEMBERS MARKED WITH '*'
P1 + P2 = 1,000 # MAX

LOADS SHOWN ARE THE MAXIMUM, TOTAL LOAD THAT CAN BE SAFELY SUPPORTED BY MEMBER 'R1'.

R2 LOAD CHART
N.T.S.

I-BEAM CAPACITY EAST-WEST RIG BEAM (SEE PLAN)

MAXIMUM UNIFORM LOAD
W = 700 #/FT

LOAD FROM (R1) + LOAD FROM (R2) = 16,000 # MAX.

WHEN CRANE IN OPERATION;
MEMBERS MARKED WITH '*'

LOAD FROM (R1) + LOAD FROM (R2) = 1,000 # MAX.

MAXIMUM SINGLE POINT LOAD
P3 = 16,000 # MAX.

LOAD FROM (R1) + LOAD FROM (R2) = 16,000 # MAX.

WHEN CRANE IN OPERATION;
MEMBERS MARKED WITH '*'

LOAD FROM (R1) + LOAD FROM (R2) = 1,000 # MAX.

LOADS SHOWN ARE THE MAXIMUM, TOTAL LOAD THAT CAN BE SAFELY SUPPORTED BY MEMBER 'R2'.

NOTES:

ALL LOADS SHOWN ARE STATIC LOADS AND DO NOT INCLUDE DYNAMIC EFFECTS.

LOADS ARE BASED ON AS BUILT DRAWINGS SHEET S0.4, "RIGGING LOADING CRITERIA, SPOKANE VETERANS MEMORIAL ARENA" DATED 11/1/93 BY ALSO ARCHITECTS.

LOADS ACCOUNT FOR UPDATED SPEAKER SYSTEM BASED ON "SPOKANE ARENA SOUND REINFORCEMENT SYSTEM REPLACEMENT" DATED 07/01/09 BY INTEGRUS ARCHITECTURE AND ADDITIONAL CATWALKS ADDED BASED ON "SPOKANE ARENA LIGHTING UPGRADE - STRUCTURAL" DATED 04/23/2012 BY INTEGRUS ARCHITECTURE. ADDITIONAL CATWALKS LIVE LOAD HAS BEEN REDUCED TO 20PSF WHEN COMBINED WITH OVERALL LOADS FOR CALCULATION OF RIGGING LOADS.

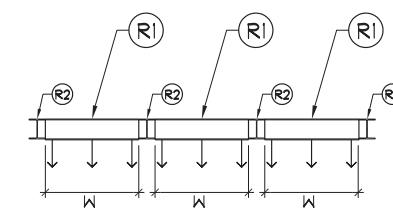
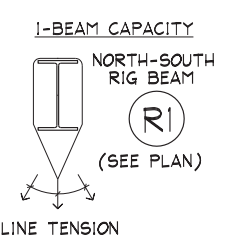
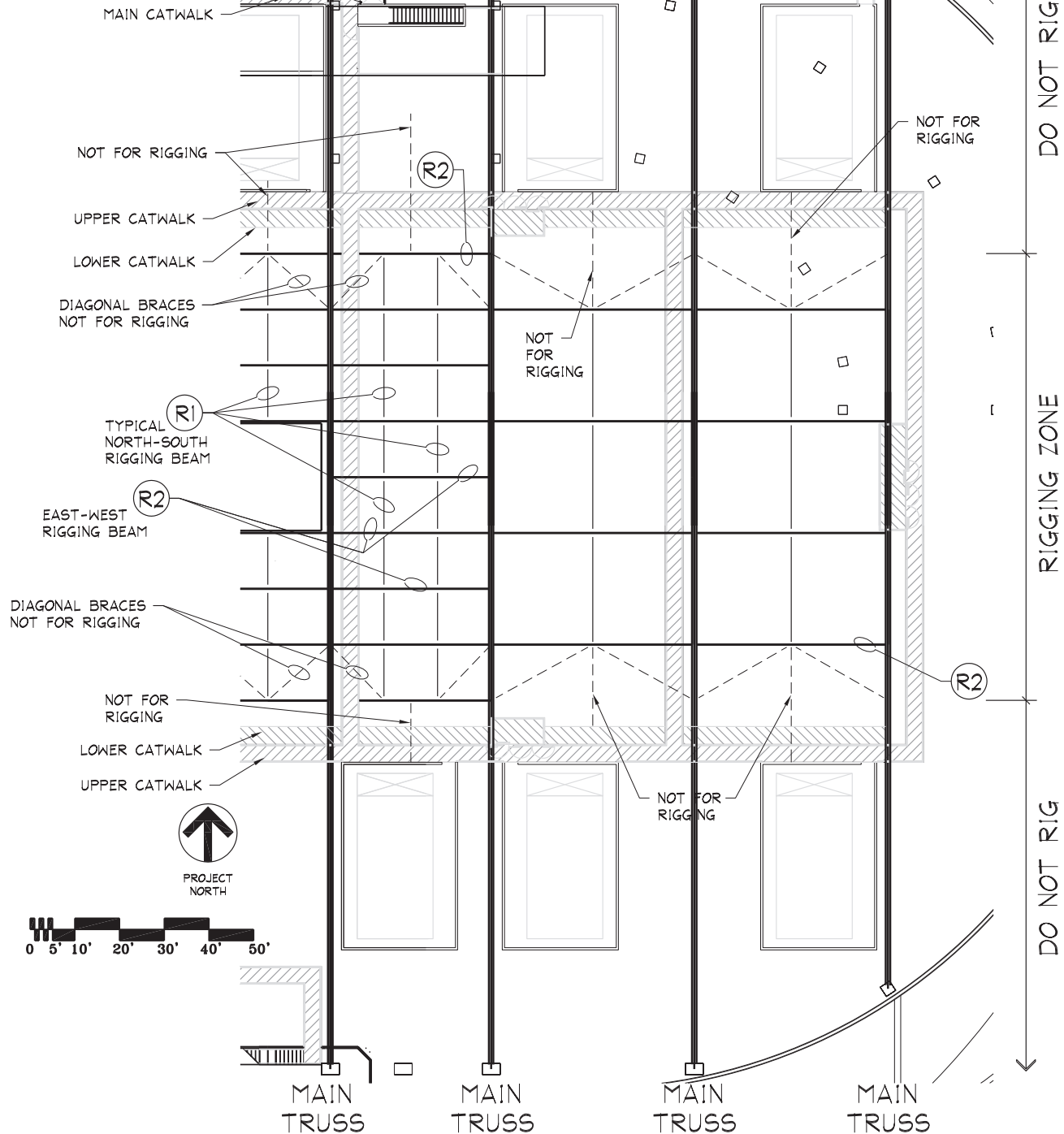
THESE LOADS ARE BASED ON AS-BUILT DRAWINGS AND FIELD OBSERVATIONS MADE IN JUNE 2012. ANY MODIFICATION TO THE BUILDING STRUCTURE OR RIGGING STRUCTURE WILL NULLIFY THIS DOCUMENT

7/30/2012 10:23:40 XREF:LIST:signature.DWG;JC-usa.DWG;Catwalk_Level_Plan.DWG;D_TITILE.DWG;Rel.Lisp.DWG

SPOKANE ARENA
RIGGING ALLOWABLE LOADING
SPOKANE VETERANS MEMORIAL ARENA
SPOKANE, WASHINGTON

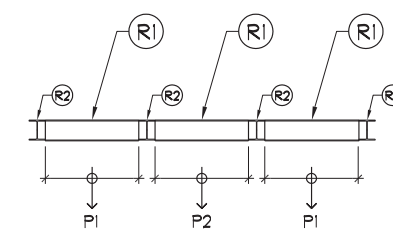
Date:	7/26/2012
Job No.:	20743.00
Drawn By:	ALH
Checked By:	TG
Filename:	21127_1-1
Revisions:	

EAST
END



MAXIMUM UNIFORM
LOAD;
W = 1250 #/FT

WHEN CRANE IN OPERATION;
MEMBERS MARKED WITH '*'
W = 75#/ft.



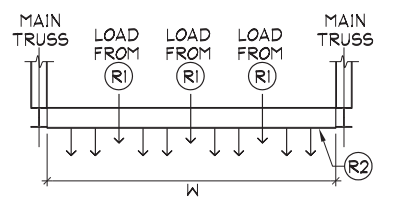
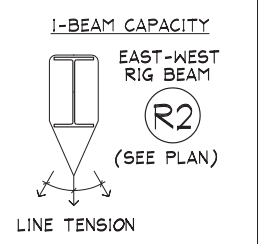
MAXIMUM SINGLE
POINT LOAD;
P1 + P2 = 16,000 # MAX.

WHEN CRANE IN OPERATION;
MEMBERS MARKED WITH '*'
P1 + P2 = 1,000 # MAX

LOADS SHOWN ARE THE MAXIMUM, TOTAL LOAD THAT CAN BE SAFELY SUPPORTED BY MEMBER 'R1'.

R1 LOAD CHART
N.T.S.

Level 1

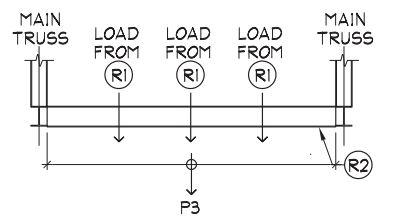


MAXIMUM UNIFORM
LOAD
W = 700 #/FT

LOAD FROM R1 + LOAD FROM R2 = 16,000 # MAX.

WHEN CRANE IN OPERATION;
MEMBERS MARKED WITH '*'

LOAD FROM R1 + LOAD FROM R2 = 1,000 # MAX.



MAXIMUM SINGLE
POINT LOAD
P3 = 16,000 # MAX.

LOAD FROM R1 + LOAD FROM R2 = 16,000 # MAX.

WHEN CRANE IN OPERATION;
MEMBERS MARKED WITH '*'

LOAD FROM R1 + LOAD FROM R2 = 1,000 # MAX.

LOADS SHOWN ARE THE MAXIMUM, TOTAL LOAD THAT CAN BE SAFELY SUPPORTED BY MEMBER 'R2'.

R2 LOAD CHART
N.T.S.

Level 1

NOTES:

ALL LOADS SHOWN ARE STATIC LOADS AND DO NOT INCLUDE DYNAMIC EFFECTS.

LOADS ARE BASED ON AS BUILT DRAWINGS SHEET S0.4, "RIGGING LOADING CRITERIA, SPOKANE VETERANS MEMORIAL ARENA" DATED 11/1/93 BY ALS C ARCHITECTS.

LOADS ACCOUNT FOR UPDATED SPEAKER SYSTEM BASED ON "SPOKANE ARENA SOUND REINFORCEMENT SYSTEM REPLACEMENT" DATED 07/01/09 BY INTEGRUS ARCHITECTURE AND ADDITIONAL CATWALKS ADDED BASED ON "SPOKANE ARENA LIGHTING UPGRADE - STRUCTURAL" DATED 04/23/2012 BY INTEGRUS ARCHITECTURE. ADDITIONAL CATWALKS LIVE LOAD HAS BEEN REDUCED TO 20PSF WHEN COMBINED WITH OVERALL LOADS FOR CALCULATION OF RIGGING LOADS.

TOTAL RIGGING CAPACITY :	(D)	(C2)	(E1)	(E2)
w/ CRANE NOT IN OPERATION =	65,000 #	66,000 #	50,000 #	60,000 #
w/ CRANE IN OPERATION =	65,000 #	66,000 #	50,000 #	60,000 #
MAXIMUM UNIFORM LOAD =	764 #/ft	776 #/ft	588 #/ft	706 #/ft

LOADS SHOWN ARE THE MAXIMUM TOTAL LOAD THAT CAN BE SAFELY SUPPORTED BY EACH TRUSS. THE SUM OF LOADS FROM 'R1' MEMBERS, 'R2' MEMBERS, & ANY ADDITIONAL RIGGING LOADS APPLIED TO THE TRUSS CANNOT EXCEED THE NOTED "TOTAL RIGGING CAPACITY" OR "MAXIMUM UNIFORM LOAD" AT EACH TRUSS.

THESE LOADS ARE BASED ON AS-BUILT DRAWINGS AND FIELD OBSERVATIONS MADE IN JUNE 2012. ANY MODIFICATION TO THE BUILDING STRUCTURE OR RIGGING STRUCTURE WILL NULLIFY THIS DOCUMENT



**SPOKANE ARENA
RIGGING ALLOWABLE LOADING**
SPOKANE VETERANS MEMORIAL ARENA
SPOKANE, WASHINGTON

Date: 7/26/2012
Job No.: 20743.00
Drawn By: ALH
Checked By: TG
Filename: 21127_1-1
Revisions: